

# Improve your beef herd's performance

## What is VistaPre-T?

VistaPre-T is a fibre pre-treatment that increases the energy density of the ration giving producers the ability to extract more from homegrown forages. Therefore VistaPre-T reduces the reliance on bought in cereals and additives.

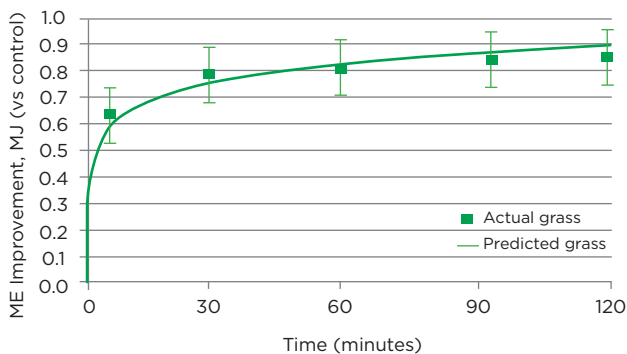
## How does it work?

VistaPre-T improves fibre breakdown by roughening and creating pits in the surface of the fibre pre-feeding, the result is an increase in fibre digestibility. By releasing more energy in the ration, farmers have the flexibility to decide how this is used - by either pushing for extra performance or reducing feed costs by taking out other more expensive energy sources.

A study was done on 150 samples of grass and maize silage, demonstrating a consistent uplift in metabolisable energy as can be seen below.

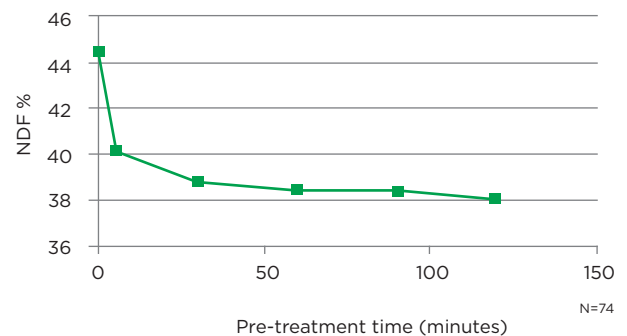
## How does VistaPre-T perform?

VistaPre-T Increases Metabolisable Energy (ME)



## Effect Of VistaPre-T On Grass Silage

VistaPre-T



## Potential energy from forage with VistaPre-T

Grass silage samples

N=74	NDF (%)	ME (MJ/Kg DM)
Average before treatment	47.9	10.8
Average after treatment	38.9	11.6
<b>Total difference</b>	<b>-9.0</b>	<b>+0.8</b>

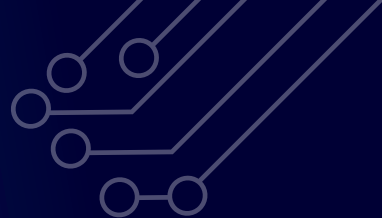
Maize silage samples

N= 76	NDF (%)	ME (MJ/Kg DM)
Average before treatment	44.8	10.40
Average after treatment	30.7	11.17
<b>Total difference</b>	<b>-14.1</b>	<b>0.77</b>



For all enquiries contact ACT Ltd.

01743 762708

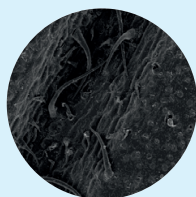


## VistaPre-T improves efficiency and performance

VistaPre-T improves fibre use, reduces emissions and provides a rumen friendly source of energy to help increase overall productivity of the animal.

### Effect of VistaPre-T on maize silage

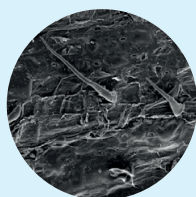
#### NO ADDITION 0 H



3 h  
incubation  
at room  
temperature

#### BUFFER

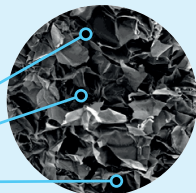
Buffer alone did not affect the fibre surface



#### +VISTAPRE-T

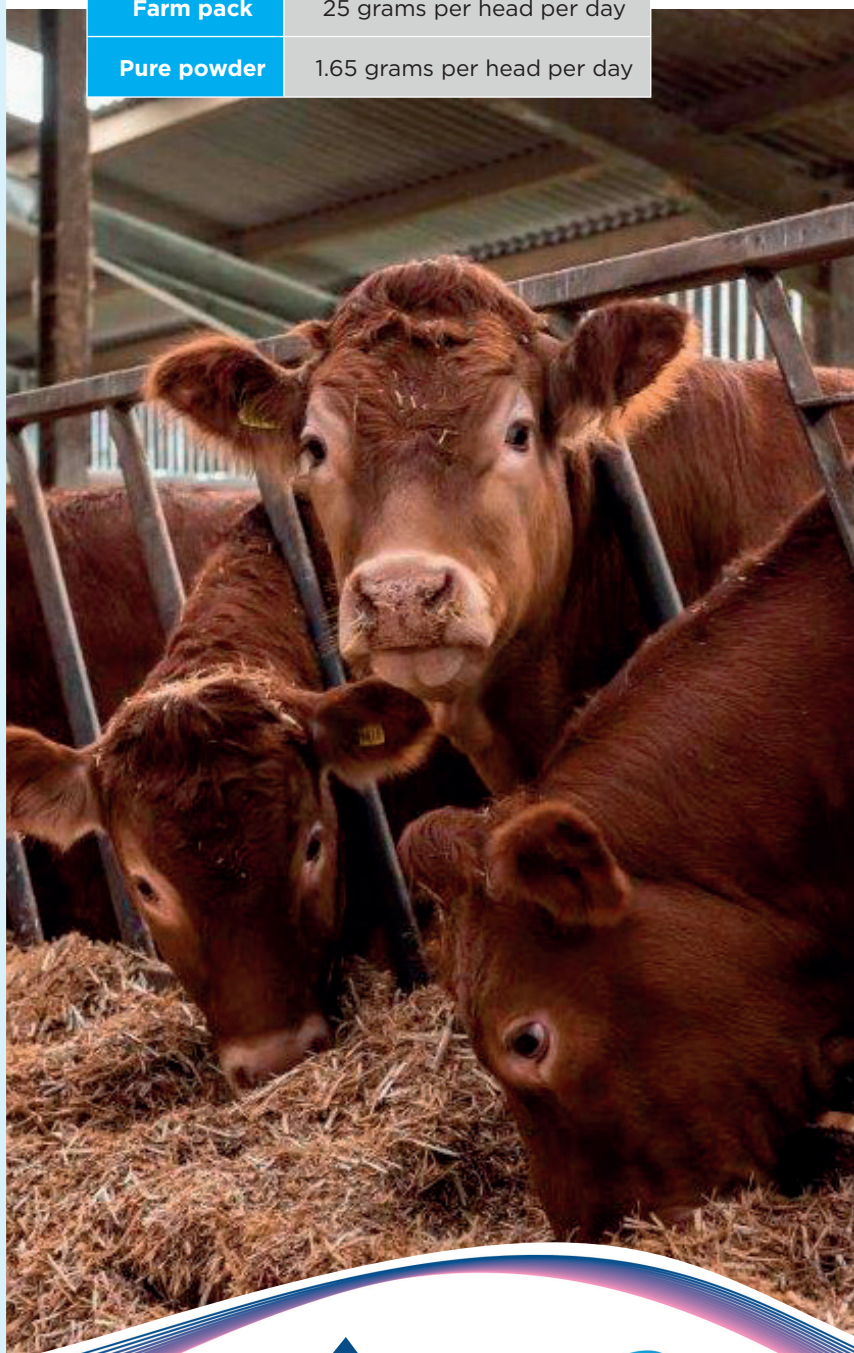
VistaPre-T clearly disrupted the fibre surface leading to the formation of holes/pits

Holes/Pits



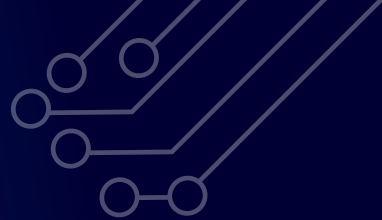
### Application feed rates/farm pack

Liquid form	7.5ml per head per day
Farm pack	25 grams per head per day
Pure powder	1.65 grams per head per day



For all enquiries contact ACT Ltd.

01743 762708



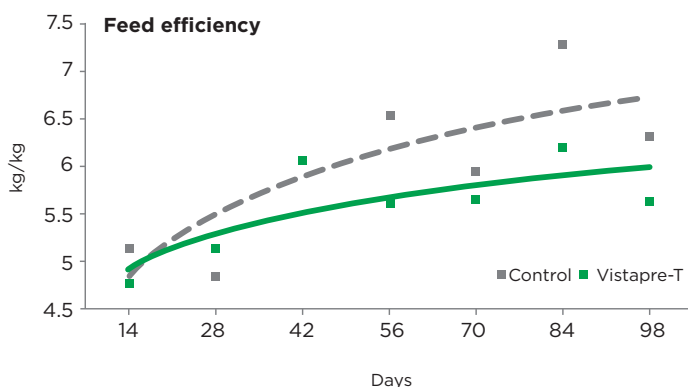
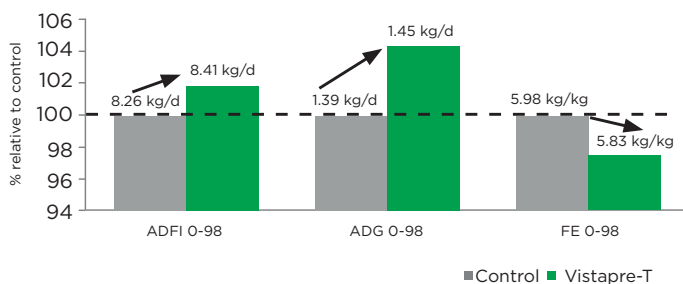
## Research highlights

AB Vista has completed several trials on VistaPre-T which show just how effective it is as a pre-treatment.

### 2015 Beef cattle trial Spain

VistaPre-T improved body weight and feed efficiency feed:gain in finishing cattle fed a corn-based diet and ad lib straw.

#### Animal average daily feed intake (ADFI) average daily gain (ADG) and feed efficiency (feed:gain) (d 0 to 98)



## Other successful research highlights include

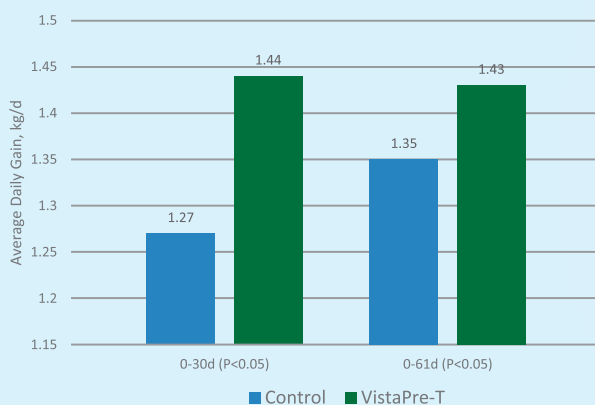
### 2019 Finishing steers trial USA

Finishing steers fed diets treated with VistaPre-T for 83 days gained an additional 10.43kg and required 0.28 kg less feed per kg of liveweight gain. These differences appear to have been driven by increases in NDF and starch digestibility, and a shift in site of starch digestion.

### 2016 leading research site USA

Pre-treating the ration of growing beef animals with VistaPre-T (0.75 litres/T DM) significantly improved:

- Average Daily Gain at 30 days (+14%) and 61 days (+5%).
- Feed to Gain ratio at 30 d (+12%) and a numerical improvement at 61 d (5%)



### Growth rate of growing beef fed rations pre-treated or not with VistaPre-T

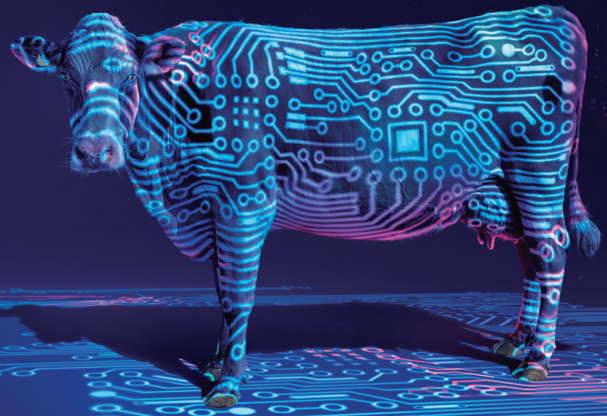
The feed to gain ratio (F:G) was significantly improved by 12% (6.47 to 5.72, P<0.05) in the VistaPre-T treatment group at 30 days. VistaPre-T numerically improved the F:G ratio from 0-61 days though this was not significant, (5%, 6.42 vs 6.13).



For all enquiries contact ACT Ltd.

01743 762708





# Improve your dairy herd's performance

## What is VistaPre-T?

VistaPre-T is a fibre pre-treatment that increases the energy density of the ration giving producers the ability to extract more from homegrown forages. Therefore VistaPre-T reduces the reliance on bought in cereals and additives.

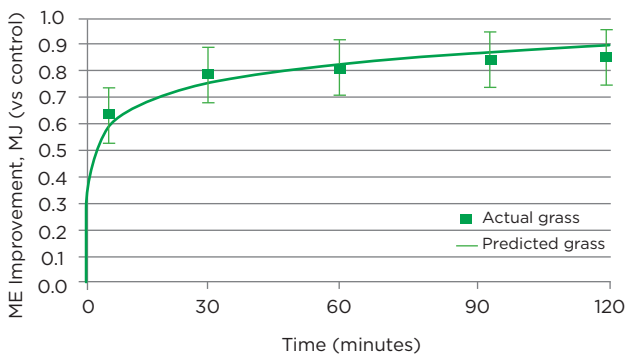
## How does it work?

VistaPre-T improves fibre breakdown by roughening and creating pits in the surface of the fibre pre-feeding, the result is an increase in fibre digestibility. By releasing more energy in the ration, farmers have the flexibility to decide how this is used - by either pushing for extra performance or reducing feed costs by taking out other more expensive energy sources.

A study was done on 150 samples of grass and maize silage, demonstrating a consistent uplift in metabolisable energy as can be seen below.

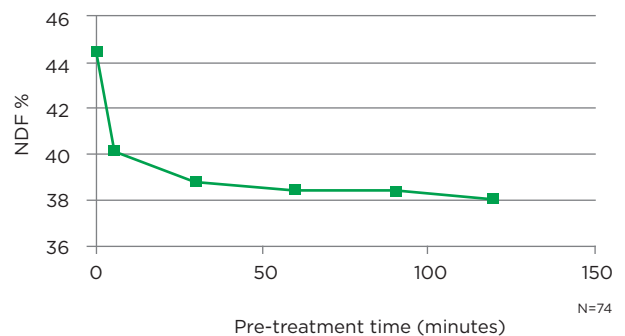
## How does VistaPre-T perform?

VistaPre-T Increases Metabolisable Energy (ME)



## Effect Of VistaPre-T On Grass Silage

VistaPre-T



## Potential energy from forage with VistaPre-T

Grass silage samples

N=74	NDF (%)	ME (MJ/Kg DM)
Average before treatment	47.9	10.8
Average after treatment	38.9	11.6
<b>Total difference</b>	<b>-9.0</b>	<b>+0.8</b>

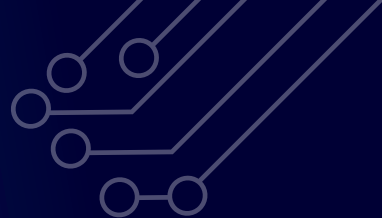
Maize silage samples

N= 76	NDF (%)	ME (MJ/Kg DM)
Average before treatment	44.8	10.40
Average after treatment	30.7	11.17
<b>Total difference</b>	<b>-14.1</b>	<b>0.77</b>



For all enquiries contact ACT Ltd.

01743 762708

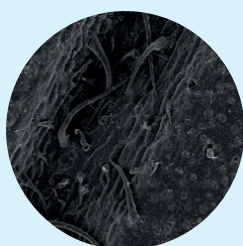


## VistaPre-T improves efficiency and performance

VistaPre-T improves fibre use, reduces emissions and provides a rumen friendly source of energy to help increase overall productivity of the animal.

### Effect of VistaPre-T on maize silage

#### NO ADDITION 0 H

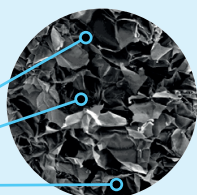


3 h incubation at room temperature



#### +VISTAPRE-T

VistaPre-T clearly disrupted the fibre surface leading to the formation of holes/pits



Holes/Pits

### Dairy - application & feed rates

#### Farm pack

50 grams per head per day

*Liquid & pure product also available on request.*

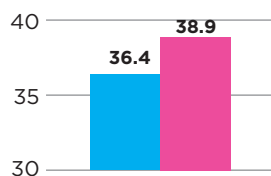
## Research highlights

In addition to the laboratory research, VistaPre-T has been proven through a number of peer reviewed published papers and UK commercial trials.

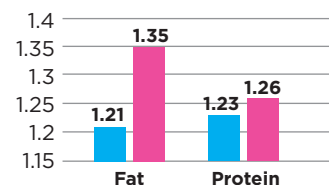
### Canada Dairy Trial (published J. Dairy Sci. 2018)

- VistaPre-T significantly increased milk production and milk components:

#### Fat Corrected Milk Production, kg/hd/day



#### Milk Components, kg/hd/day



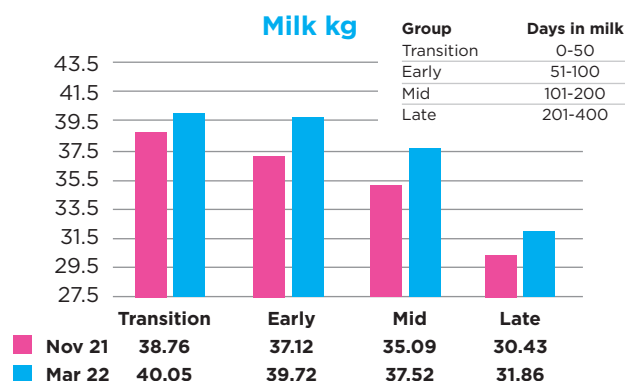
Control VPT

### UK Dairy Trial (2022)

- 400 cows, 5 month trial
- VistaPre-T Farmpack included at 50g/head/day
- Consistent ration throughout trial

#### Results:

- Average increase of 1.93 litres!



For all enquiries contact ACT Ltd.

01743 762708

# MAKE YOUR FORAGE GO FURTHER

As we move through the winter and into 2023, there appears to be little relief for the feed industry and dairy producers as feed prices and production challenges remain. Raw material markets continue to be volatile and now milk price is also coming under negative pressure. It is therefore more critical than ever that producers focus on feed efficiency and getting the most from their home grown forage to maintain milk yield and quality.

Lower forage quality and quantity are issues many farms have been facing this winter and being able to extract the most from the forage becomes even more important. Vista Pre-T (VPT) is a forage pre-treatment that works to make the cellulose and hemicellulose fibre fractions more accessible to the ruminal fibre-digesting microorganisms by roughening and creating pits on the surface of the feed material to create more adhesion sites for the fibre digestors (See comparison images below). By reducing the lag time to digestion, the rumen's natural ability to digest forage is improved, which increases the feeding value of the existing ration so we can expect more from less or improvements in feed efficiency.

## MAXIMISE WHAT YOU HAVE

Silage quality hasn't been great with higher NDF, lower ME and lower D value compared to the previous year (Figure 1). High lignin levels have also been reported in many of these early silages, putting further pressure on the digestible fractions of fibre as the precursors for volatile fatty acids needed to supply energy to the cow and for butterfat.



Laboratory NIR analysis of 74 grass silage samples showed that after Vista Pre-T application, an average energy uplift of 0.8MJ/kg DM was recorded. This means that if the grass silage was provided at 35 kg/head/day (fresh weight) with a DM value of 32%, then applying Vista Pre-T would equate to an additional 8.96MJ of energy which could potentially be around 1.6-1.7 litres of milk increase/head/day.

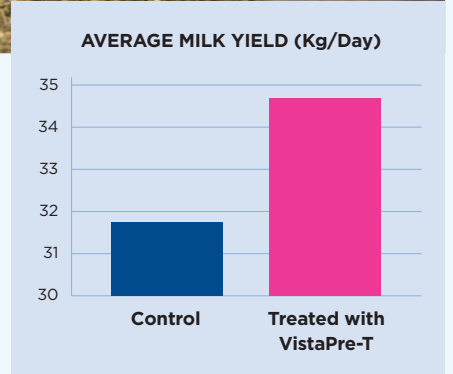


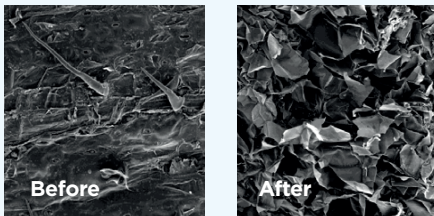
Figure 2: Commercial Trial milk yield results

## YOU CAN GET MORE FROM LESS

In a commercial trial the inclusion of Vista Pre-T to the grass silage-based total mixed ration (TMR) allowed the nutritionist to reduce ground maize, molasses and a protected C18 and increase the grass silage provision. The ration remained consistent for a 44-day period in which individual daily milk yields were recorded and compared to 44 days prior to Vista Pre-T inclusion. When using this 'energy matrix' approach, we aim

for equal performance as we have in effect removed energy. However, what we saw was an average increase in milk yield of 2.8 L/cow/day (Figure 2). The producer made an additional £93 per 100 cows/day from Vista Pre-T application.

■ Contact [ABVista.com](http://ABVista.com) and get more from your forage today.



Above: Vista Pre-T clearly disrupts the fibre surface leading to formulation of holes/pits

	2021 Early Cuts	2022 Early Cuts
ME (MJ/kg DM)	11.7	11.4
NDF (% DM)	41.8%	46.1%
D value (% DM)	73.2%	71.5%

Figure 1: Adapted from Trouw's silage watch for July 22

The science of producing **more** whilst producing **less** with **VistaPre-T**

ABVista

FOR MORE INFORMATION CALL 01743 762708

