



PRODUCT GUIDE

ACTION MINERALS, ACTOLICKS & ACTION FEEDBLOCKS

Who are ACT?

AGRICULTURAL CENTRAL TRADING LTD

ACT are a farmer owned cooperative supplying essential farm inputs to a wide range of customers throughout England, Wales and Scotland. Established in 1962, ACT have been offering independent advice across a range of products from Feed and Fertiliser to Minerals, Animal Health and Seeds to farmers across many generations.

Our considerable buying power, throughout a range of markets coupled with our low operating costs, means that substantial savings are passed to our customers, on both popular branded ranges and our own label ACTION products.

The ethos of ACT is to provide value for money by selecting products to meet the needs of our customers, whilst providing high quality products and excellent services from our knowledgeable team independent Area Managers.

ACT also provides additional service including forage analysis, soil sampling, mineral analysis and access to a wealth of independent knowledge amongst our qualified teams of Area Managers.

CONTENTS

Who are ACT?	2
ACTION Minerals.....	3
ACTION Minerals Range.....	6
ACTION Cereal Balancer Range	20
ACTOLICK Buckets.....	22
- Feed Buckets.....	24
- Mineral Buckets	26
- Special Buckets.....	28
ACTION FeedBlocks.....	30
What product should I feed to cattle?.....	34
What product should I feed to sheep?	35




ACTION MINERALS

ACTION MINERALS

The ACTION ADVANCED range of mineral and vitamin supplements have been formulated to take account of the latest research findings on the nutritional requirements of cattle and sheep, the biological availability of minerals and trace elements in various raw materials and the trace element content of grass and silage. Particular attention has been paid to the levels of key elements such as magnesium, zinc, copper, iodine, selenium and vitamin E.

All our minerals adhere to the strictest standards:

- They have  accreditation.
- They are available as in feed or free access.
- Chelated elements are incorporated in specific products to help improve mineral bioavailability.
- Minerals are palatable and dust free. In Feed minerals contain a level of de-duster to help minimise dust, Free Access Minerals also include a flavour and water proofing agents.

- All raw materials purchased from source assured suppliers and quality parameters monitored through a documented testing plan.
- Additives such as Acidbuf and Vistacell from Trident Micronutri are incorporated where appropriate

Special mix custom minerals

The ACTION range of mineral vitamin supplements contains products designed to meet the needs of sheep, beef and dairy cattle fed a wide range of diets and at all stages of growth and production. Where special needs exist, due to the soil type or feeding system, changes can be made to a standard product or a mineral can be specially formulated to balance an individual ration or address specific health problems.



FORAGE MINERAL ANALYSIS

Minerals function in all aspects of life, from hormone and energy production, digestion, muscle contraction, regulation of body fluid and pH levels, to digestion and reproduction. They are critical in all of the production parameters such as milk, fleece and muscle tissue, as well as normal growth, reproduction, and feed conversion efficiencies required in our production animals.

Minerals and trace elements have three broad types of functions:

1. Structural components of body organs and tissues
2. Constituents of body fluids and tissues as electrolytes, which are concerned with body fluid balance, acid-base balance, membrane permeability and tissue irritability.
3. Catalysts in enzyme and hormone systems

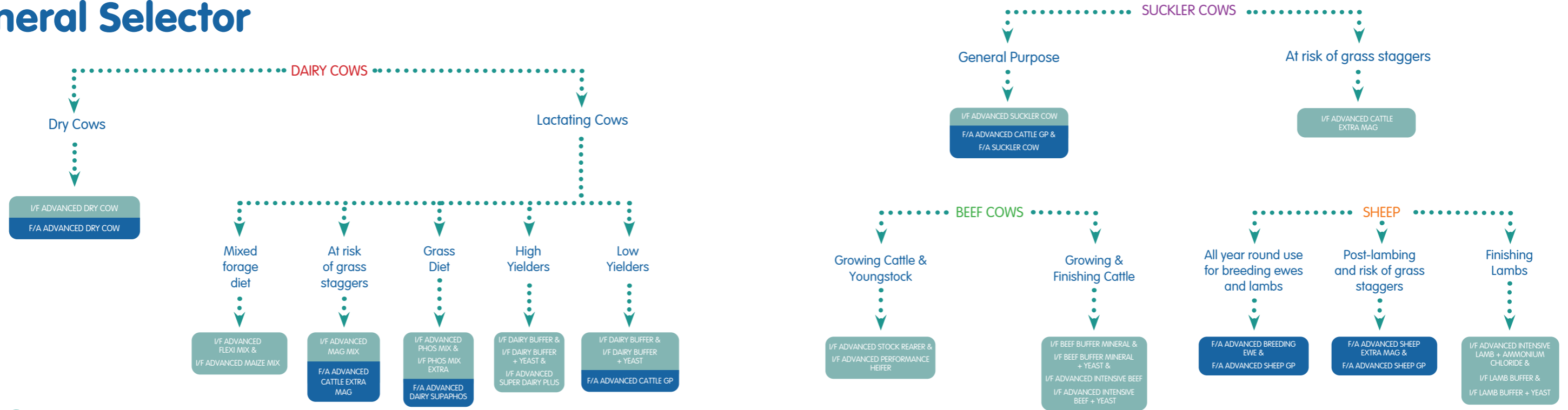
Balancing diets for minerals, trace elements and vitamins is therefore as important as ensuring major nutrients such as protein and energy are meeting animal requirements.

There are 15 minerals essential for cattle and sheep health and productivity. They are a combination of macro, major, micro and trace and levels can vary significantly in feeds and forages.

To help you select the right mineral supplement for your stock, ACT will arrange for a sample of your silage to be analysed for its mineral content for a small fee. This analysis report will show the amount of each major mineral and trace element in your forage and whether this level is high, average or low.



Mineral Selector



ACTION MINERALS LACTATING COW RANGE

ALL PRODUCTS contain an optimal package of minerals, trace elements and vitamins

I/F ADVANCED SUPER DAIRY PLUS

A high specification dairy mineral ideal for all milking cattle

- Contain optimum copper (including multiple sources and a protected source) to help support fertility at bulling
- High selenium, including protected selenium and vitamin E to help support the immune system function & overall animal health
- Optimum zinc, including a source of protected zinc, to help maintain hoof and udder health
- Added vitamin B12 to help support energy metabolism

Typical Intakes: up to 150g/head/day

I/F ADVANCED FLEXI MIX

An in-feed mineral supplement designed for all cattle on grass and forage-based diets

- Contains a full complement of minerals, vitamins and trace elements
- Optimum copper, from multiple sources, to help support fertility
- Optimum zinc to help foot health mastitis issues

Typical Intakes: up to 150g/head/day

I/F = in feed and F/A = free access

I/F ADVANCED PHOS MIX

A high phosphorus mineral supplement ideal for high yielding dairy cows or those on lower phosphorus diets

- Optimum copper, including multiple sources, to support fertility
- Optimum zinc to help support hoof health and mastitis issues

Advanced Phos Mix Extra: contains high levels vitamin E

Typical Intakes: up to 150g/head/day

I/F ADVANCED MAIZE MIX

A mineral supplement designed for cattle on a maize or wholecrop silaged based diet

- A full range of minerals, vitamins and trace elements to complement those often found lacking in maize and wholecrop silages
- Contains optimum copper including multiple sources to support breeding stock

Typical Intakes: up to 150g/head/day

I/F DAIRY BUFFER

A high specification dairy mineral with the addition of Acid Buf to help stabilise rumen pH and function when high starch diets are fed or animals are at risk of acidosis

- A full complement of minerals, vitamins and trace elements to support overall animal health
- Contains Acid Buf, to help stabilise rumen pH
- Optimum copper, including protected, to help support fertility
- High selenium to help support the immune system
- Contains a good level of zinc to help maintain hoof health

Typical Intakes: up to 150g/head/day

I/F DAIRY BUFFER + YEAST

A high specification mineral, vitamin and trace element supplement with the addition of Acid Buf and Vistacell yeast to support rumen function

Contains Acid Buf, to help stabilise rumen pH

- Optimum copper, including a protected source, to help support fertility
- High selenium to help support the immune system
- Contains a good level of zinc to help maintain hoof health

Typical Intakes: up to 150g/head/day

F/A ADVANCED CATTLE EXTRA MAG

A high magnesium mineral supplement for cows at risk of grass staggers

- Contains minerals, vitamins and trace elements including high magnesium to complement those often found lacking in grazing diets
- Optimum levels of copper and high levels of zinc to support tissue, hoof and udder health

Typical Intakes: up to 150g/head/day

I/F ADVANCED MAG MIX

A high magnesium mineral supplement for cows at risk of grass staggers

- Contains minerals, vitamins and trace elements including high magnesium to complement those often found lacking in grazing diets
- Optimum levels of copper and high levels of zinc to support tissue, hoof and udder health

Typical Intakes: up to 150g/head/day



F/A ADVANCED CATTLE GP

A high specification general purpose mineral supplement ideal for all cattle

- Contains optimal levels of copper to help support fertility
- High selenium, including a protected source, to help support good overall health
- Optimum level of zinc support tissue, hoof and udder health

Typical Intakes: up to 150g/head/day

F/A ADVANCED DAIRY SUPAPHOS

A high phosphorus mineral supplement ideal for high yielding dairy cows or those on lower phosphorus diets

- Formulated with a high level of phosphorus to help support performance during lactation in high yielding cows
- Contains a good level of copper, from multiple sources, to help support fertility
- Contains a good level of zinc to help in the management of any potential lameness and mastitis issues

Typical Intakes: up to 150g/head/day

I/F = in feed and F/A = free access

ACTION MINERALS DRY COW RANGE

ALL PRODUCTS contain an optimal package of minerals, trace elements and vitamins

I/F & F/A ADVANCED DRY COW

A high specification, low calcium, high magnesium mineral supplement ideal for high yielding dairy cows on the approach to calving

- No added calcium and high magnesium to help mobilise calcium for lactation
- Optimum copper, including protected copper, to help support fertility
- Contains a high level of zinc, including protected zinc, to support hoof health
- Optimum selenium, including a protected source and high vitamin E help support immunity and overall animal health throughout the transition period

Typical Intakes: up to 150g/head/day

ACTION MINERALS SUCKLER COW RANGE

ALL PRODUCTS contain an optimal package of minerals, trace elements and vitamins

I/F & F/A ADVANCED SUCKLER COW

A specialist mineral supplement designed for suckler cows

- Contains a full complement of minerals, vitamins and trace elements to complement those often lacking in forage and grass-based diets
- Higher level of magnesium, useful for where there is a risk of grass staggers
- Optimum copper, from multiple sources, including a protected source, to help support fertility and support daily live weight gains in growing cattle
- Optimum zinc, including some protected zinc, to help in the management of any potential lameness and mastitis issues

Typical Intakes: up to 150g/head/day

F/A ADVANCED CATTLE GENERAL PURPOSE

A high specification general purpose mineral supplement ideal for all cattle

- Contains optimal levels of copper to help support fertility
- High selenium, including a protected source, to help support good overall health
- Optimum level of zinc support tissue, hoof and udder health

Typical Intakes: up to 150g/head/day

I/F = in feed and F/A = free access

F/A ADVANCED CATTLE EXTRA MAG

A high magnesium mineral supplement for cows at risk of grass staggers

- Contains minerals, vitamins and trace elements, including high magnesium, to complement those often found lacking in grazing diets
- Optimum levels of copper and high levels of zinc to support tissue, hoof and udder health

Typical Intakes: up to 150g/head/day



ACTION MINERALS BEEF COW RANGE

ALL PRODUCTS contain an optimal package of minerals, trace elements and vitamins

I/F ADVANCED INTENSIVE BEEF

An in-feed mineral supplement specially designed for finishing beef cattle

- No added magnesium or phosphorus to help reduce the incidence of urinary calculi in fattening cattle
- Optimal package of minerals, vitamins and trace elements to balance typical finishing beef rations
- Added iron to help counter low levels in straw and high cereal diets
- Also available with added yeast to support rumen health
- **Also available as Intensive Beef Plus yeast:** All the same benefits plus a specially selected strain of yeast known to support optimal rumen health and animal performance.

Typical Intakes: up to 150g/head/day

I/F ADVANCED STOCK REARER

An in-feed mineral supplement specially designed for growing cattle

- Ideal for beef cattle and heifer replacements on low-input systems throughout the year
- Contains an optimal package of minerals, vitamins and trace elements often deficient in forage-based diets

Typical Intakes: up to 150g/head/day

I/F = in feed and F/A = free access

I/F ADVANCED PERFORMANCE HEIFER

An in-feed mineral supplement designed for dairy heifers

- Optimal level of phosphorus to help support growth and development through lactation
- Chelated protected copper to help support fertility
- High selenium, including protected selenium, to help support health
- Optimum zinc including a protected source to help support hoof health and mastitis issues

Typical Intakes: up to 150g/head/day

I/F BEEF BUFFER MINERAL

An in-feed mineral supplement containing Acid Buf to help stabilise rumen pH in cattle at risk of acidosis

- Formulated without added magnesium to help reduce incidence of urinary calculi in fattening cattle
- A full complement of minerals, vitamins and trace elements
- Added iron to help counter low levels in straw and high cereal diet
- **Also available as Beef Buffer Plus Yeast:** All the same benefits plus Vistacell Yeast, a specially selected strain of live yeast which helps to stabilise rumen pH and increase fibre digestion to support maximum animal performance.

Typical Intakes: up to 150g/head/day



ACTION MINERALS SHEEP RANGE

ALL PRODUCTS contain an optimal package of minerals, trace elements and vitamins

F/A ADVANCED BREEDING EWE 🇬🇧

A high specification free-access mineral supplement specially designed for use in breeding ewes

- High level of zinc, including protected zinc, to help with potential lameness and mastitis issues
- High level of selenium, including protected selenium and optimum vitamin E to help support ewe immunity
- Optimum cobalt and vitamin B12 to help support good growth rates on cobalt deficient pasture
- Added vitamin B1 for where there may be a risk of cerebrocortical necrosis (CCN)

Typical Intakes: up to 30g/head/day

F/A ADVANCED SHEEP GP 🇬🇧

A general purpose mineral supplement ideal for sheep on forage-based systems throughout the year

- Contains an optimal package of minerals, vitamins and trace elements to support overall animal health
- High selenium to help support good overall animal health
- Optimum zinc to help support hoof health and mastitis issues

Typical Intakes: up to 30g/head/day

I/F = in feed and F/A = free access



F/A ADVANCED SHEEP EXTRA MAG

A high magnesium mineral supplement designed for feeding to grazing ewes when there is a risk of grass staggers

- Contains an optimal package of minerals, vitamins and trace elements to complement levels often found deficient in grazing
- Not suitable for feeding on the approach to lambing

Typical Intakes: up to 150g/head/day

I/F ADVANCED INTENSIVE LAMB + AMMONIUM CHLORIDE

A specially formulated mineral supplement with the addition of ammonium chloride for intensively finished lambs

- No added mag to help reduce incidence of urinary calculi in fattening lambs
- High vitamin E and zinc to help support hoof, muscle and skin condition
- Added vitamin B1 ideal for where there is a risk of CCN
- Added vitamin B12 to help support energy metabolism

Typical Intakes: up to 30g/head/day



I/F = in feed and F/A = free access

I/F LAMB BUFFER

A high specification lamb mineral with the addition of Acid Buf to help stabilise rumen pH

- No added magnesium to help reduce the incidence of urinary calculi in fattening lambs
- Zinc and vitamin E to help support hoof, muscle and skin condition
- Added vitamin B1 ideal for where there is a risk of CCN
- Added vitamin B12 to help support energy metabolism
- Also available with added yeast to support lamb production and rumen health
- **Also available as Lamb Buffer Plus Yeast:** All the same benefits plus Vistacell Yeast, a specially selected strain of live yeast which helps to stabilise rumen pH and increase fibre digestion to support maximum animal performance.

Typical Intakes: up to 150g/head/day



ACTION MINERALS CEREAL BALANCER RANGE

A range of protein meals specifically designed for mixing with cereals for intensively reared cattle. Products also contain a balanced package of minerals, trace elements and vitamins to help counteract any potential deficiencies in cereals.

ACTION CEREAL BALANCER

A specialist, urea-based, complementary minerals feed formulated for use as part of finishing cattle rations

- Provides a high level of protein from urea
- Formulated without magnesium to help reduce the risk of urinary calculi
- PLUS Acid Buf to help stabilise rumen pH to support cattle performance
- PLUS yeast contains Yeast, which helps to stabilise rumen pH and increase fibre digestion
- Also available with both yeast and Acif Buf
- Ideal for home-mixing for cereal-fed cattle diets

Directions For Use

- Including one bag per tonne of cereals will produce approximately 14% crude protein mix which is suitable for finishing cattle
- Use as part of a home-mix
- Do not mix with other rations already containing urea
- Do not feed to ruminants under 12 weeks of age

25kg pack size

I/F = in feed and F/A = free access

ACTION CATTLE BOOSTER 50 PLUS YEAST

A urea-based, mineralised complementary feed suitable for use as part of a mixed ration alongside forage, in growing or finishing cattle diets

- Provides 50% protein from urea and natural sources
- Good level of energy from protected fat to help maintain optimal body condition score and good growth performance
- Specially selected strain of yeast, known to help maintain a healthy and stable rumen environment
- Ideal for home-mixing for cereal-fed cattle or those on lower protein diets

Direction of use

- The level of inclusion will be dependent on the desired protein level in the finished mix and target performance
- For best results, introduce to the diet gradually over a 7 to 10-day period
- Do not feed to ruminants under 12 weeks of age
- One bag of product will supply 1.25% protein when mixed with cereals or similar ingredients

25kg pack size





ACTOLICK RANGE

ACTOLICK

ACTOLICK buckets are feed and mineral molassed supplements formulated to improve the value of home grown forages and feeds, whilst also supporting production for cattle and sheep.

ACTOLICK buckets contain quality ingredients and micro-nutrients to ensure you get the best performance from your livestock. Using the most recent research on animal requirements, the ACTOLICK range contain optimum levels of minerals and vitamins to help support fertility, health and stock performance.

THE BENEFITS:

- 12 formulations to suit all livestock systems all year round
- Improves forage digestibility and utilisation
- Helps balance potential mineral deficiencies in grass and forages
- Palatable and easy to use, available in 22.5kg or 100kg tubs

INTAKE GUIDE:

Typical intake levels are a guide only and will be affected by:

- The quality of grazing available
- Animal age and liveweight
- Proximity to water
- Weather conditions
- Number of feeding sites

FEEDING RECOMMENDATIONS:

- Allow one 25kg bucket for every 15 cattle or 35 sheep
- Allow one 100kg tubs for every 50 cattle or 90 sheep



Feed Buckets



SHEEP HIGH ENERGY

High energy, 14MJ ME/kg DM for feeding at tupping through to lambing

- Gives ewes an energy boost when they need it most
- 12% protein from high quality DUP sources to optimise milk production
- Ideal where there is a risk of twin lamb disease
- Ultra high vitamin E levels at 1000iu/kg and selenium to help support easy lambing and lamb thriftiness
- Contains omega-3 fatty acids from fish oil to support fertility and lamb survivability
- Use at grass for finishing lambs

Typical Intakes: 75-150g/head/day

Sizes Available: 22.5kg/100kg



CATTLE HIGH ENERGY

High energy and protein lick for all cattle including dairy heifers

- 16% protein from multiple sources and 13MJ ME/kg DM to optimise lean tissue growth and daily liveweight gain
- Ideal for dairy heifers to help achieve target weights and frame development
- High selenium and vitamin E support a healthy immune system
- With added copper in protected form to help prevent "lock-up" for optimal energy utilisation and fertility (not suitable for sheep)

Typical Intakes: 200-400g/head/day

Sizes Available: 22.5kg/100kg



UNIVERSAL

High energy and protein for cattle and sheep

- High energy and 16% protein from multiple protein sources (including urea)
- Provides extra energy and protein to balance forages and roughages
- Without copper for mixed grazing situations
- Full mineral and vitamin pack including 500iu/kg vitamin E to help balance any potential deficiencies

Typical Intakes:

Ewes - 75-150g/head/day

Cattle - 200-400g/head/day

Sizes Available: 22.5kg/100kg



SUCKLER COW

High energy and protein for suckler cows and heifers to support fertility at bulling and pre- and post-calving

- High energy and 18% protein from different protein sources to help improve the value of forages and roughages
- Balanced protein, containing natural and urea protein to help complement lower quality grazing and forages
- Contains optimum levels of chelated copper to help support fertility
- 500iu/kg vitamin E to optimise healthy stock
- Not suitable for sheep

Typical Intakes: 200-400g/head/day

Sizes Available: 22.5kg/100kg

Mineral Buckets



CATTLE HIGH MAG ^M

High magnesium lick with 15% magnesium to help where there is a risk of grass staggers in cattle

- Multiple sources of magnesium used for optimal availability
- Salt to aid magnesium absorption
- 4500mg/kg of zinc included to help support immune function and help reduce lameness and udder tissue issues
- Added copper for optimum health and fertility (not suitable for sheep)

Typical Intakes: 50-150g/head/day

Sizes Available: 22.5kg/100kg



CATTLE MINERAL BALANCER ^M

Mineral and vitamin lick to balance pasture and forages

- Use for all cattle throughout the year
- Supplies vital trace elements to support cattle performance
- 2% phosphorus, 13% calcium and 3% magnesium
- High level of selenium at 30mg/kg and 500iu/kg vitamin E to support immune function
- 2000mg/kg of copper for optimum health and fertility including chelated copper to help prevent lock-up (not suitable for sheep)
- 4500mg/kg zinc included at high levels to help support immune function against lameness and support hoof health

Typical Intakes: 50-150g/head/day

Sizes Available: 22.5kg/100kg



SHEEP HIGH MAG ^M

A specially designed high mag bucket for sheep. 10% magnesium ensures adequate intakes

- Multiple sources of magnesium used for optimal availability
- Salt to aid magnesium absorption
- 4500mg/kg of zinc included to help support immune function and help reduce lameness and udder tissue issues

Typical Intakes: 20-60g/head/day

Size Available: 22.5kg



SHEEP MINERAL BALANCER ^M

Mineral and vitamin supplement to balance any potential deficiencies in forages and grazing

- Use for all sheep throughout the year
- High levels of selenium at 30mg/kg and an ultra-high vitamin E at 1000iu/kg, to optimise ewe health and lamb vitality
- 5000mg/kg zinc with chelated zinc to help support healthy feet
- Contains 100mg/kg of vitamin B1 to help support against CCN

Typical Intakes: 20-60g/head/day

Size Available: 22.5kg



Special Buckets



PRE-CALVER

Complete top specification feed supplement with chelated zinc, copper and selenium for dry cows and in-calf heifers

- Optimum magnesium level at 10% with low calcium levels at 3% to help with the management of metabolic problems such as milk fever at calving
- Selenised yeast included with ultra-high vitamin E levels at 2000iu/kg to help support immune function and reduce risk of retained placentas and infections such as metritis
- 2500mg/kg of zinc, including chelated zinc to help support immunity against infections that may cause lameness and mastitis
- 1250mg/kg copper, including chelated copper to support fertility post-calving (not suitable for sheep)
- High energy and protein from soya to balance rations pre-calving

Typical Intakes: 200-400g/head/day **Sizes Available:** 22.5kg/100kg



DRY COW MINERAL BALANCER

Specifically formulated mineral and vitamin lick for dairy and beef cows and heifers during the final 6 to 8 weeks of pregnancy

- Contains a low level of calcium and a good level of magnesium to help promote calcium mobilisation and reduce the risk of milk fever and a slow calving
- The inclusion of selenised yeast and 3500iu/kg of vitamin E helps to support both cow and calf immunity and promote newborn calf health
- Contains chelated copper and zinc to help optimise cow health and fertility (not suitable for sheep)

Typical Intakes: 50-150g/head/day

Sizes Available: 22.5kg/100kg



BUZZ OFF

Mineral and vitamin supplement to help balance potential deficiencies in grazing and forage

- Contains a potent source of garlic to help discourage biting insects
- Optimal balance of minerals, vitamins and trace elements to help balance potential deficiencies in forage
- Use for both cattle and sheep throughout the summer grazing season
- Withdrawal period 7 days for milk; 21 days for meat

Typical Intakes:

Ewes - 20-60g/head/day

Cattle - 50-150g/head/day

Size Available: 22.5kg



FEET & FERTILITY

A specialist mineral, vitamin and trace element bucket to support hoof health and fertility for cattle and sheep

- Fortified with essential minerals, vitamins and trace elements to help balance potential deficiencies in forages
- Contains a high level of protected zinc to help support good hoof health, and selenised yeast to help support good overall health
- Contains a high level of magnesium for use where there is a risk of grass staggers
- Contains fish oil as a source of omega-3 fatty acids to support fertility and conception rates at breeding time

Typical Intakes:

Ewes - 20-60g/head/day

Cattle - 50-150g/head/day

Size Available: 22.5kg



ACTION FEEDBLOCKS

A range of protein and energy pressed blocks for feeding alongside forage and grassed-based diets

FEATURES and BENEFITS OF FEEDING FEEDBLOCKS

- Maximises grazing utilisation
- Convenient and labour saving
- Highly cost-effective
- 24/7 feed availability discourages bullying and promotes performance
- No troughs needed
- Contains essential minerals and vitamins
- Blocks are weatherproof
- Available in 25kg blocks

ACTION EWE BOOSTER FEEDBLOCK

A high specification energy and protein block ideal for feeding around tugging, pre- and post-lambing

- 18% protein for optimum performance and milk yield (urea and natural sources)
- High energy due to the fermentable starch and protected fat
- Ultra-high level of vitamin E
- Use pre/post lambing and to finish lambs
- Optimal package of minerals, vitamins and trace elements to complement grazing and forage-based diets
- Contains fish oil high in omega 3's for optimum fertility and lamb survivability

ACTION SHEEP FEEDBLOCK

An economical block to use mid-pregnancy with in-lamb ewes before switching to Action Ewe Booster closer to lambing

- High protein level (20%) (urea and natural sources)
- Fortified with minerals, vitamins and trace elements to support overall animal health
- Can also be fed to ewe lambs running on through the winter to provide maintenance and enhance forage intake and utilisation

GRASS STAGGERS – COMMON FACTORS:

Below are some common factors that are always present with grass staggers:

- Animals are usually grazing lush dominant pasture, often without any hay supplementation.
- Cold and wet windy weather with little or no shelter, resulting in short periods of fasting.
- The danger period extends from April to October.
- Animals are either fat but losing condition or very thin.
- Animals recently moved to a different paddock.
- Heavy use of nitrogen and/or potash fertiliser on pasture.

Dairy cows and ewes in peak lactation are most commonly affected, however dry cows and under certain conditions, beef steers, may also suffer.

ACTION MAG BOOSTER FEEDBLOCK

A high magnesium feed and mineral block for grazing ewes and cattle at risk of grass staggers

- Provide 10% magnesium, highly available and palatable
- Feed to cattle and sheep at risk from grass staggers
- Contains full complement of minerals, vitamins and trace elements to support overall animal health
- Reduces/eliminates the need for concentrates

ACTION CATTLE BOOSTER FEEDBLOCK

A high protein feed and mineral block for cattle with access to power quality forages and grazing to support optimal health and production

- Supports daily liveweight gain by up to 0.24kg versus forage alone
- Contains optimal balance of minerals, vitamins and trace elements to complement grass and forage-based diets
- Contains copper (not suitable for sheep)
- Feed to dairy/suckler cows, breeding youngstock and stores
- Blocks are proven to replace up to 1.5kg/day trough feed for the same performance with ad-lib forage

FEEDBLOCK INTAKE GUIDE

Cattle: up to 500 g/h/d

Sheep: up to 300 g/h/d

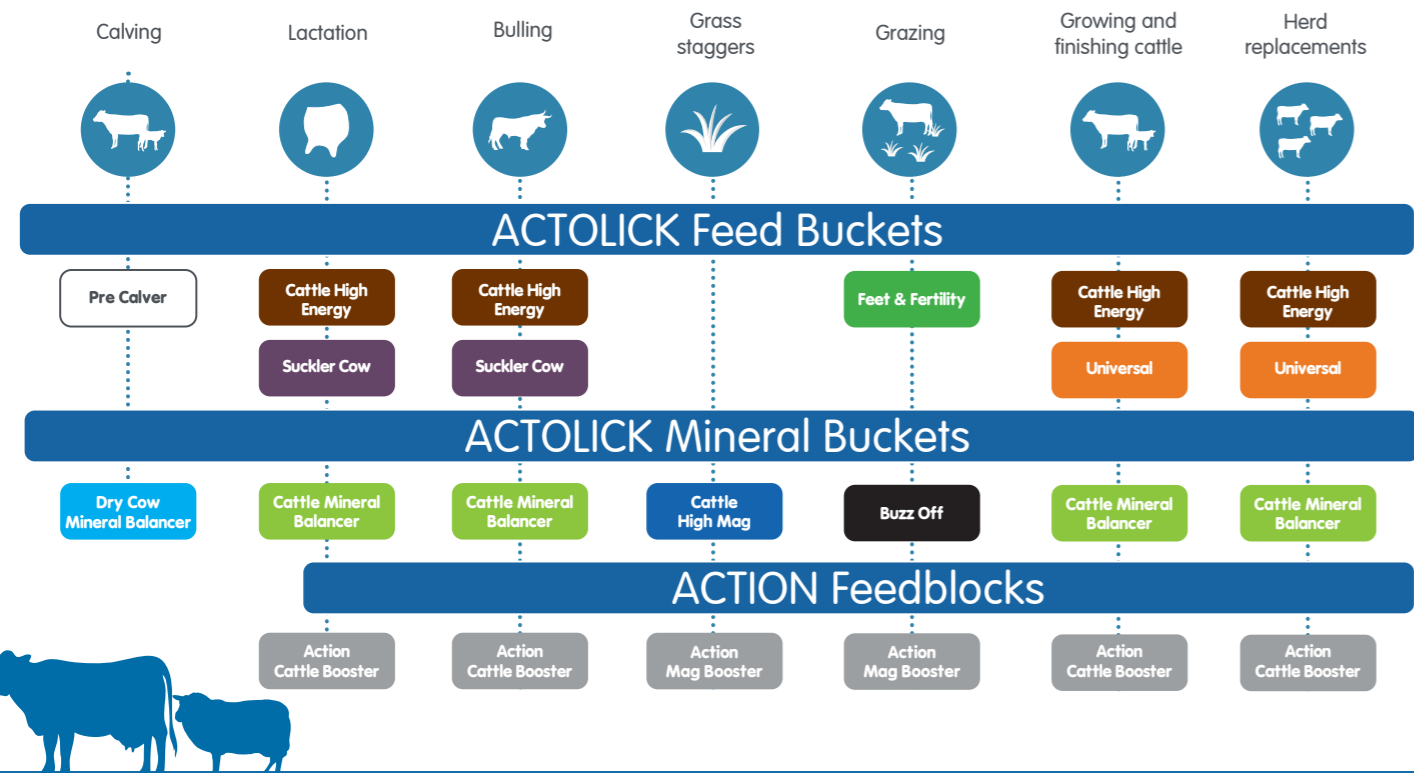
Placement rates

Cattle: 1 block/12 head

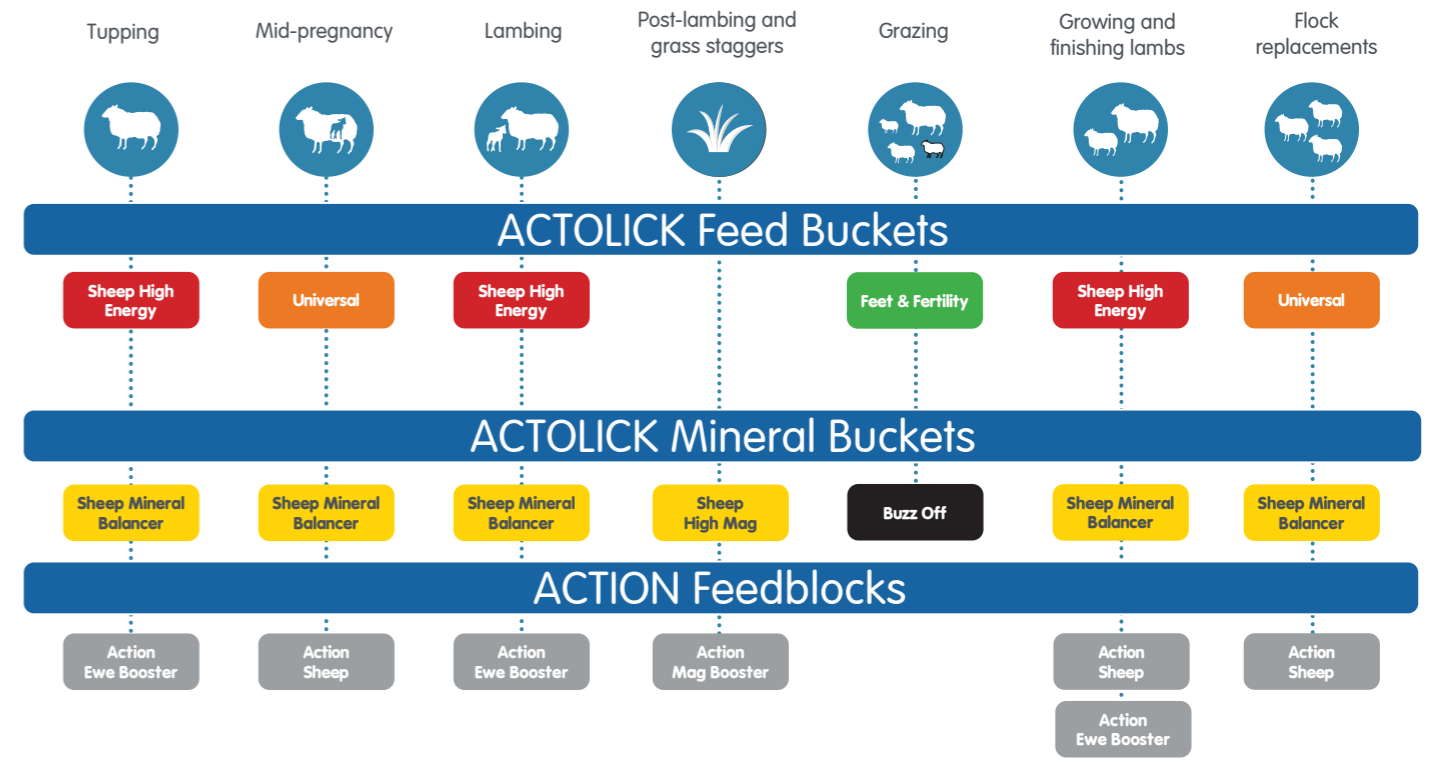
Sheep: 1 block/25 head



Which product should I feed to cattle?



Which product should I feed to sheep?





Agricultural Central Trading Limited
28 Atcham Business Park, Atcham, Shrewsbury, SY4 4UG
08000 275 276 www.actionfarm.co.uk